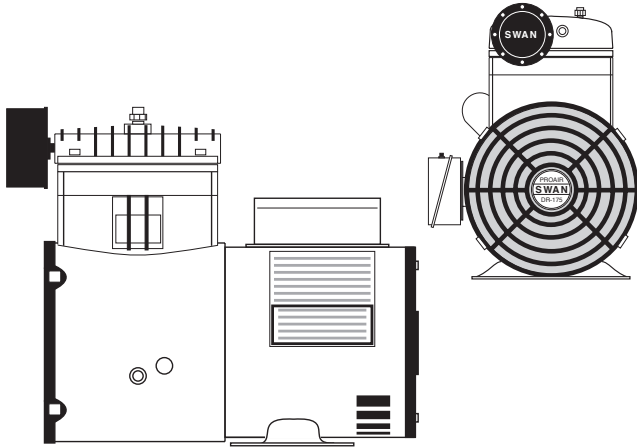
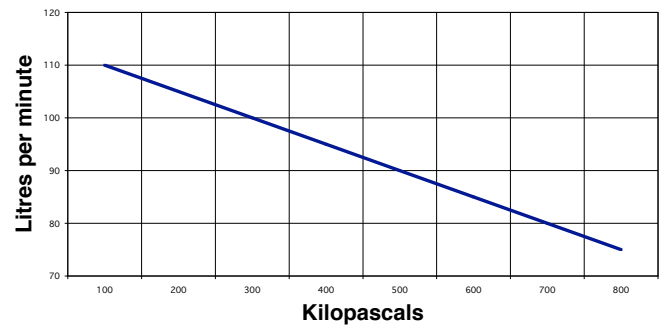


SWAN model DR-115 Single stage OIL FREE 1 cyl. air cooled

Rev.
No. CS1104-DR115



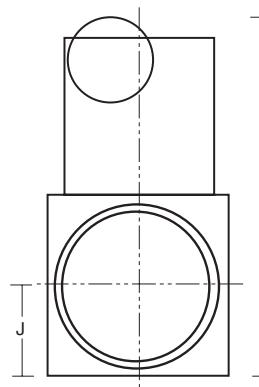
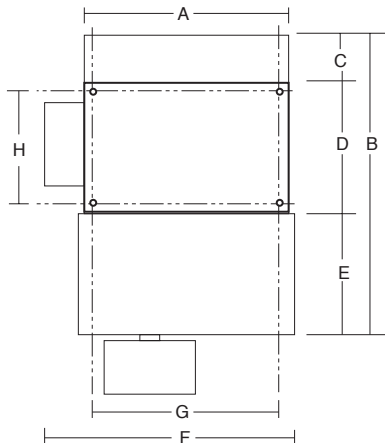
DR-175 PERFORMANCE



| | |
|------------------------------|--------------------|
| Main Construction Material | Alloy |
| Bore | mm 70 |
| Stroke | mm 22 |
| Minimum Speed | rpm 450 |
| Normal Speed | rpm 1450 |
| Maximum Speed | rpm 1690 |
| Minimum Working Pressure | kPa 275 |
| Maximum Working Pressure | kPa 800 |
| Minimum Ambient Temperature | Celsius 0° |
| Maximum Ambient Temperature | Celsius 45° |
| Air Connection Comp. Fitting | mm 10 |
| Air Cleaners | Dry foam Type |
| Bore Lubrication | P.T.F.E / Graphite |
| Oil Capacity of Crankcase | N/A |
| Type of Drive | Direct |
| Approximate Net Weight | kgs 8 |
| Rotation Looking at Flywheel | Anti-clockwise |

The following are at normal speed with an ambient temperature of 31.1°C & inlet air of 101 kPa g pressure.

| | | |
|-------------------------------|---------|------|
| Piston Displacement | L/min | 122 |
| Free Air Delivery @ 689 kPa | L/min | 84 |
| Shaft Input: | | |
| @ 415 kPa | kW | 0.76 |
| @ 551 kPa | kW | 0.78 |
| @ 689 kPa | kW | 0.79 |
| @ 800 kPa | kW | 0.81 |
| Temperature of Air Discharge: | | |
| @ 415 kPa | Celsius | 107° |
| @ 551 kPa | Celsius | 119° |
| @ 689 kPa | Celsius | 128° |
| @ 800 kPa | Celsius | 134° |
| Motor Power | kW | 1.10 |
| Motor Power Supply | Volts | 240 |
| Noise Level at 1 metre | dB(A) | 75 |



| | |
|---|--------|
| A | 220 mm |
| B | 305 mm |
| C | 45 mm |
| D | 100 mm |
| E | 123 mm |
| F | 175 mm |
| G | 140 mm |
| H | 75 mm |
| I | 280 mm |
| J | 85 mm |

Forbes (Aust) Pty Ltd reserves the right to change the specifications of any of its products without prior notice