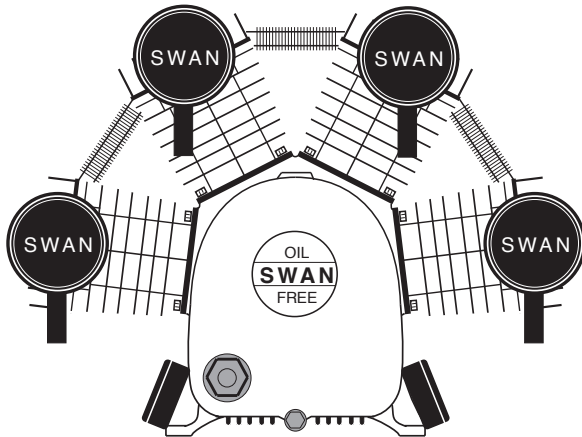
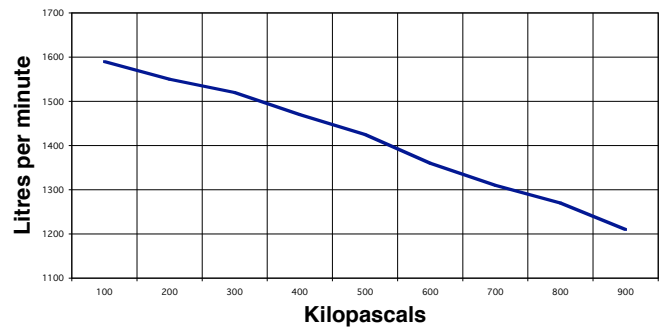


### SWAN model SD-415 Single stage OIL FREE 4 cyl. air cooled

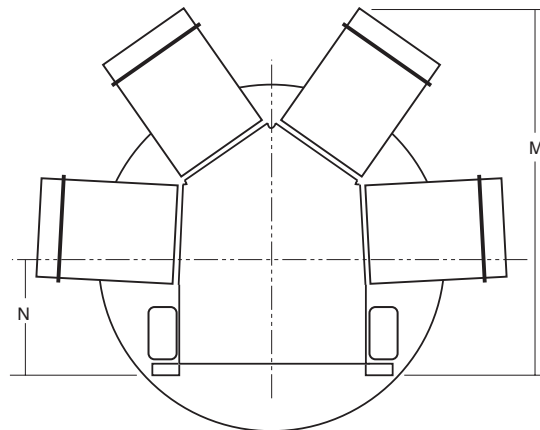
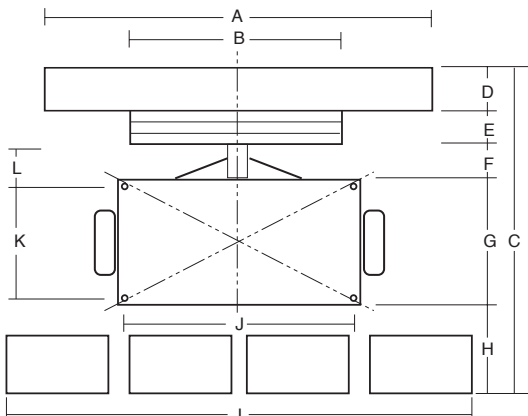
Rev.  
No. CS0308-SD415



### SD-415 PERFORMANCE



Main Construction Material	Cast Iron / Alloy	<i>The following are at normal speed with an ambient temperature of 31.1°C &amp; inlet air of 101 kPa g pressure.</i>			
Bore	mm	95	Piston Displacement	L/min	1885
Stroke	mm	70	Free Air Delivery @ 689 kPa	L/min	1321
Minimum Speed	rpm	600	Shaft Input:		
<b>Normal Speed</b>	<b>rpm</b>	<b>950</b>	@ 415 kPa	kW	7.50
Maximum Speed	rpm	1050	@ 551 kPa	kW	8.48
Minimum Working Pressure	kPa	275	@ 689 kPa	kW	9.38
Maximum Working Pressure	kPa	860	@ 860 kPa	kW	10.13
Minimum Ambient Temperature	Celsius	0°	Temperature of Air Discharge:		
Maximum Ambient Temperature	Celsius	40°	@ 415 kPa	Celsius	113°
Air Connection (x2) Comp. Fitting	mm	25	@ 551 kPa	Celsius	119°
Air Cleaners	Dry Paper Type		@ 689 kPa	Celsius	133°
Bore Lubrication	P.T.F.E / Graphite		@ 860 kPa	Celsius	144°
Oil Capacity of Crankcase	N/A		Maximum Lubricant Consumed		
Type of Drive	V-belt	3B	in 100 hours Operation	N/A	
Approximate Net Weight	kgs	105	Noise Level at 1 metre	dB(A)	88
Rotation Looking at Flywheel	Anti-clockwise				



A	560 mm
B	250 mm
C	570 mm
D	60 mm
E	67 mm
F	60 mm
G	300 mm
H	70 mm
I	800 mm
J	275 mm
K	180 mm
L	120 mm
M	550 mm
N	200 mm

Forbes (Aust) Pty Ltd reserves the right to change the specifications of any of its products without prior notice