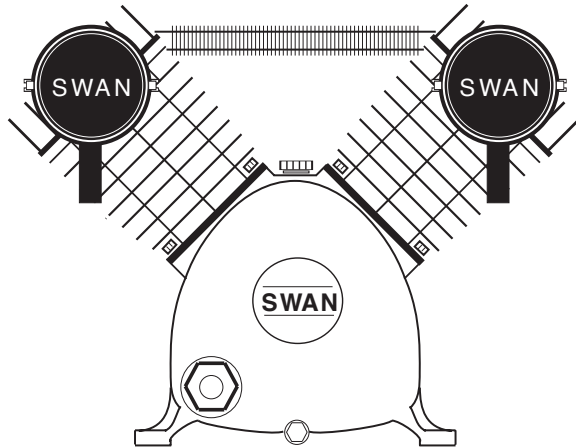
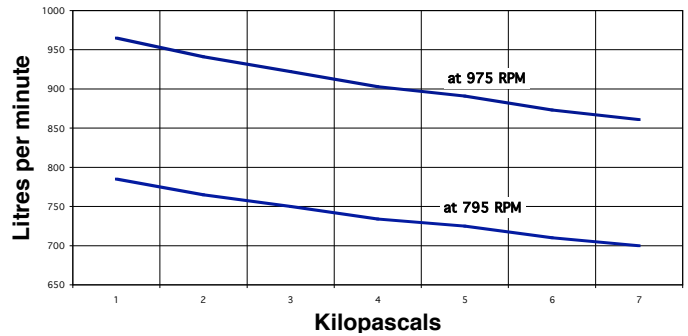


### SWAN model SV-205 Single stage 2 cyl. air cooled

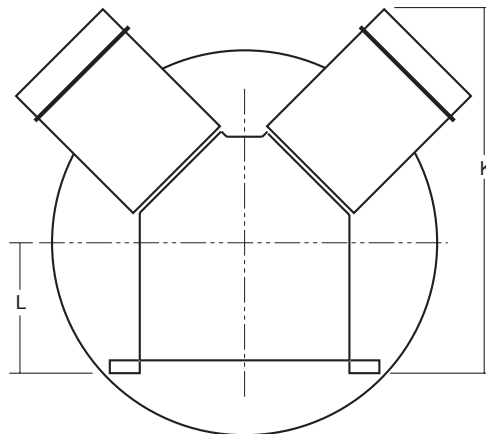
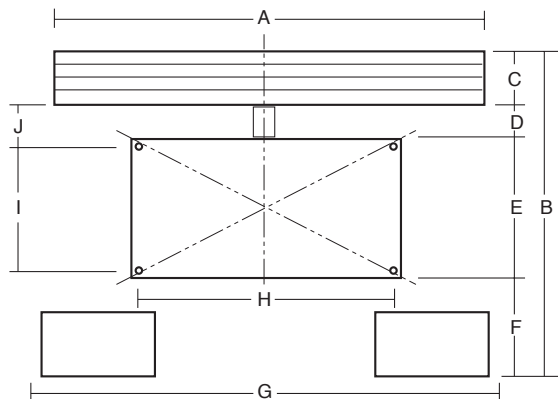
Rev.  
No. CS0402-SV205



### SV-205 PERFORMANCE



|                              |                |   |                               |            |       |
|------------------------------|----------------|---|-------------------------------|------------|-------|
| Main Construction Material   | Cast Iron      | <i>The following are at normal speed with an ambient temperature of 31.1°C &amp; inlet air of 101 kPa g pressure.</i> |                               |            |       |
| Bore                         | mm             | 95  | Piston Displacement           | L/min      | 958   |
| Stroke                       | mm             | 85  | Free Air Delivery @ 689 kPa   | L/min      | 734   |
| Minimum Speed                | rpm            | 570   | Shaft Input:                  |            |       |
| <b>Normal Speed</b>          | <b>rpm</b>     | <b>795</b>  | @ 415 kPa                     | kW         | 3.67  |
| Maximum Speed                | rpm            | 975   | @ 551 kPa                     | kW         | 4.20  |
| Minimum Working Pressure     | kPa            | 275   | @ 689 kPa                     | kW         | 4.64  |
| Maximum Working Pressure     | kPa            | 964   | @ 964 kPa                     | kW         | 5.33  |
| Minimum Ambient Temperature  | Celsius        | 0°  | Temperature of Air Discharge: |            |       |
| Maximum Ambient Temperature  | Celsius        | 45°   | @ 415 kPa                     | Celsius    | 135°  |
| Air Connection Comp. Fitting | mm             | 25  | @ 551 kPa                     | Celsius    | 150°  |
| Air Cleaners                 | Dry Paper Type |   | @ 689 kPa                     | Celsius    | 160°  |
| Bore Lubrication             | Splash Feed    |   | @ 964 kPa                     | Celsius    | 183°  |
| Oil Capacity of Crankcase    | Litres         | 1.136   | Maximum Lubricant Consumed    |            |       |
| Type of Drive                | V-belt         | 3A  | in 100 hours Operation        | millilitre | 55.10 |
| Approximate Net Weight       | kgs            | 67  | Noise Level at 1 metre        | dB(A)      | 83    |
| Rotation Looking at Flywheel | Anti-clockwise |   |                               |            |       |



|   |        |
|---|--------|
| A | 400 mm |
| B | 420 mm |
| C | 65 mm  |
| D | 60 mm  |
| E | 180 mm |
| F | 60 mm  |
| G | 585 mm |
| H | 275 mm |
| I | 130 mm |
| J | 85 mm  |
| K | 450 mm |
| L | 152 mm |

Forbes (Aust) Pty Ltd reserves the right to change the specifications of any of its products without prior notice